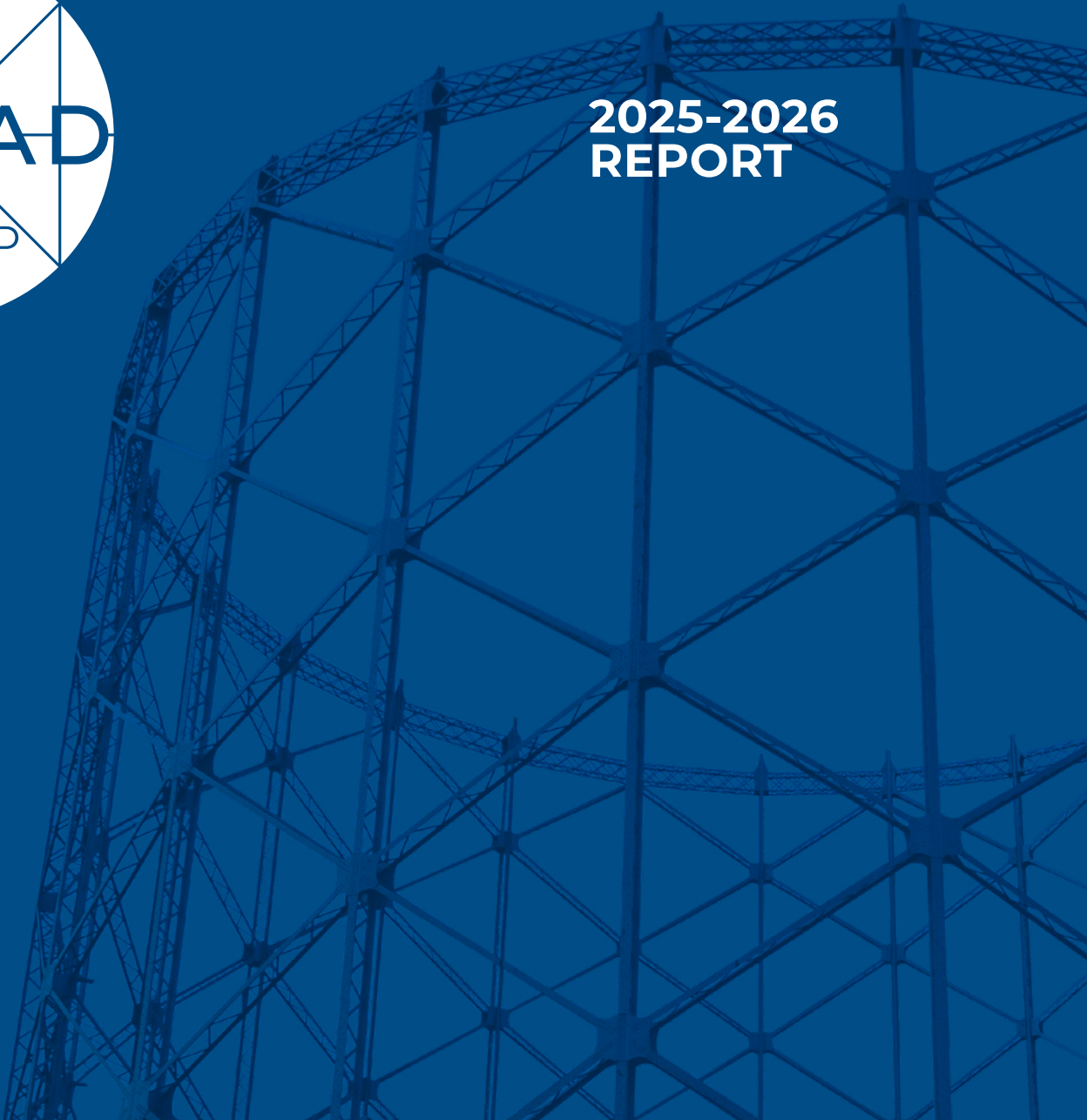




# 2025-2026 REPORT



Mappa: 1

Tevere

Alleg. 513

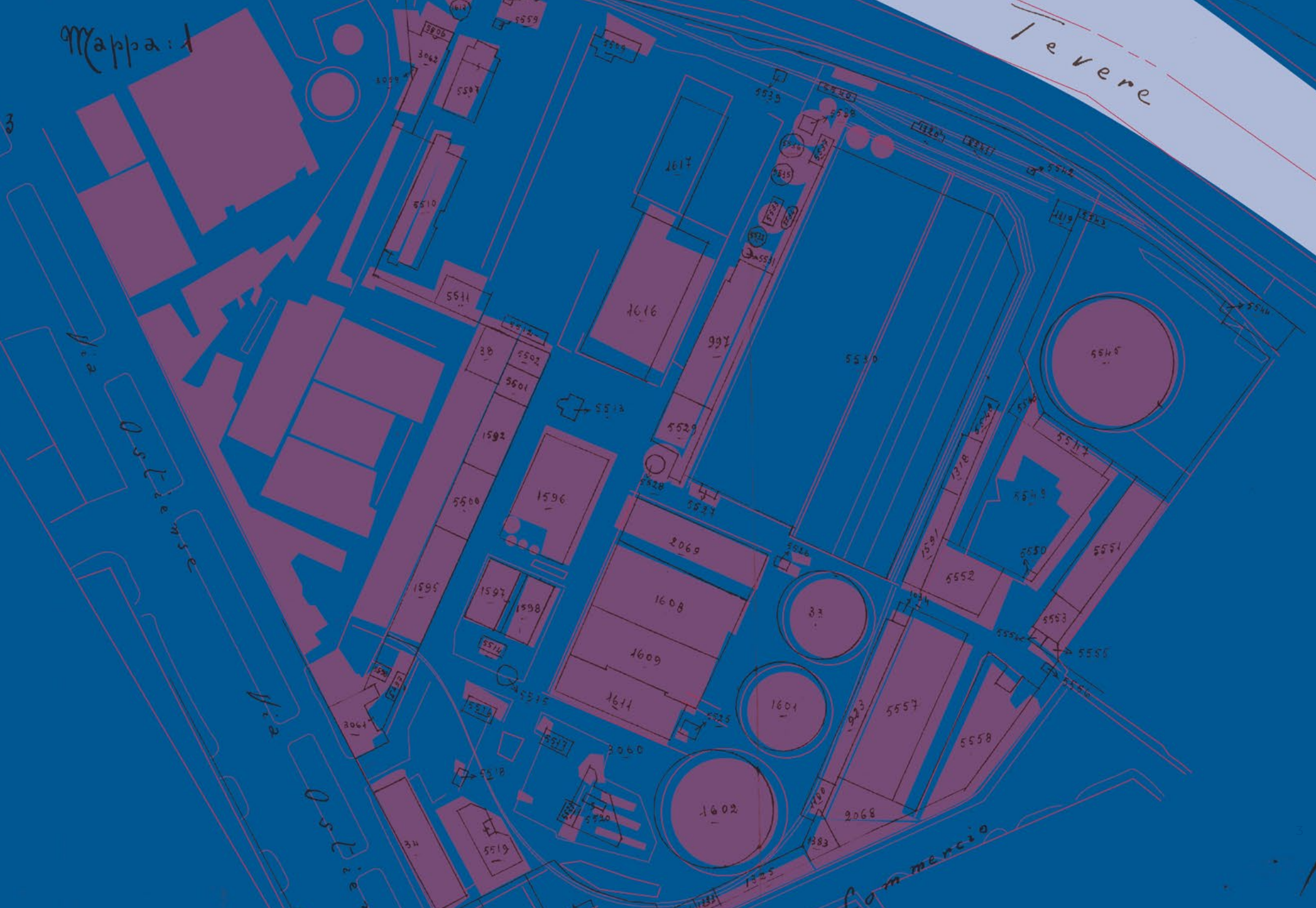
Via

Poste

Via

Poste

Commercio



# INDEX

**01** INTRODUCTION 6

**02** WHO WE ARE 10

**03** HIGHLIGHTS 20

**04** WHAT WE DO 24

**05** INTERNATIONAL  
RELATIONS AND  
COLLABORATIONS 50

Q1

**INTRODUCTION**

## THREE YEARS OF ROAD

As ROAD completes its first phase, it now looks ahead to the next three years, further strengthening its role as an innovation District and as a point of reference for collaboration between businesses and institutions to accelerate **technological evolution** in urban and infrastructure systems.

The Network, established in 2023, in 2026 welcomed a new co-founder, eFM, an internationally recognised provider of digital services for spaces and buildings. Together, we will continue our commitment to foster the development and adoption of **innovative solutions** focused on safety, sustainability and service efficiency.

The results achieved to date confirm the strength of the model, built on collective work and a **shared vision**. Over three years, we have launched more than 15 projects, built national and international partnerships, and engaged universities, innovation ecosystems and institutions.

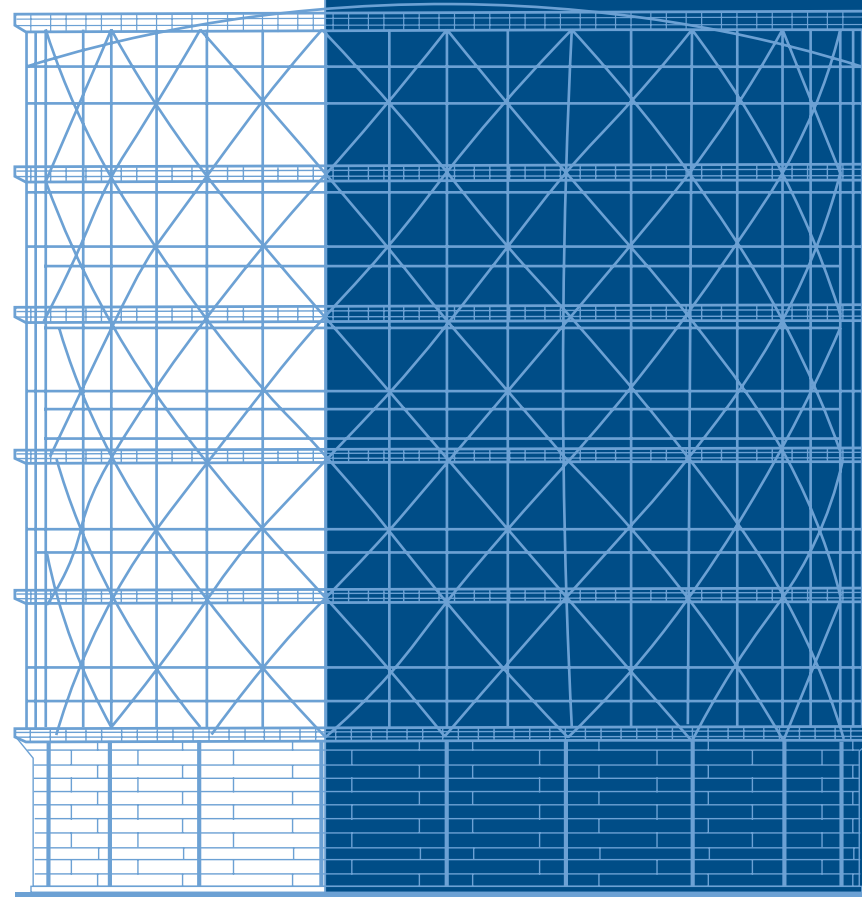
Our 2026–2029 programme focuses on three priority areas: infrastructure resilience and reliability, efficient management of energy and urban resources, and the development of advanced mobility through the evolution of the PNRR project “FULL ROAD”, dedicated to safety and autonomous driving and carried out in collaboration with the MOST Foundation. We will continue to invest in **talent development**, preparing the future leaders of the ecological and digital transitions, and will further expand our network of collaborations beyond Italy, promoting the exchange of expertise and best practices. This shared effort helps **drive the transformation** of cities and infrastructure, with **innovation serving communities and the wider public**.



**WHO WE ARE**

## THE IRON GIANT: history and redevelopment

The roads that meet in Rome do not only cross space, but also time. The past, the present and the future intersect at a very specific point in the eternal city: the area which is home to the **Gasometer** in the **Ostiense** district. Here, the past is still clearly visible in the remains of what used to be **the energy hub of the capital of Italy** for about half a century during the 20th century. At the now disused plants and factories, trains loaded with coal arrived to supply the gas that powered the city. In 1909, at the initiative of Mayor Ernesto Nathan, the first of the four current gasometers was built, along with the gasworks that would later become the headquarters of Italgas. Between 1910 and 1912, the first three relatively small gasometers with a total capacity of 110,000 cubic metres of gas came into operation. Then, in 1936, the great "iron giant" with a capacity of 200,000 cubic metres was built with the help of the Genoese company Ansaldo. At that time, it was the largest in Europe. Since 2006, the area around the Gasometer has been undergoing major urban **regeneration and restoration**. In the same year, the Municipality of Rome, in collaboration with Eni, launched one of the first redevelopment projects in the area with the creation of the artwork "Luxometro". This regeneration effort transformed the Gasometer from an industrial symbol into a **cultural and artistic icon of the city of Rome**.



1935-1937  
YEAR OF CONSTRUCTION

2,800sqm  
SURFACE AREA

2,000m<sup>3</sup>  
CAPACITY

90m  
HEIGHT

65m  
CIRCUMFERENCE

## CO-FOUNDERS



**Eni** is an integrated energy company committed to the energy transition with concrete actions towards carbon neutrality by 2050.



**Acea** supports citizens by providing essential services and improving their daily lives, aiming for ever higher quality through efficient infrastructure management and investments in technological innovation.



**Autostrade per l'Italia** is committed to making mobility increasingly sustainable, safe, innovative and efficient, responding to the current and future needs of society and communities.



**Bridgestone** is one of the global leaders in tyres and sustainable mobility. It provides solutions for vehicle equipment and products related to tyre processing.



**Cisco** is a world leader in networking and Information Technology. It inspires the creation of new applications, secures data, transforms infrastructure and provides people with tools to collaborate and build an inclusive future.



**eFM** supports public and private organisations worldwide in managing, monitoring and enhancing complex spaces and infrastructure, integrating technology, services and experience to make environments more efficient, sustainable and experience-based.



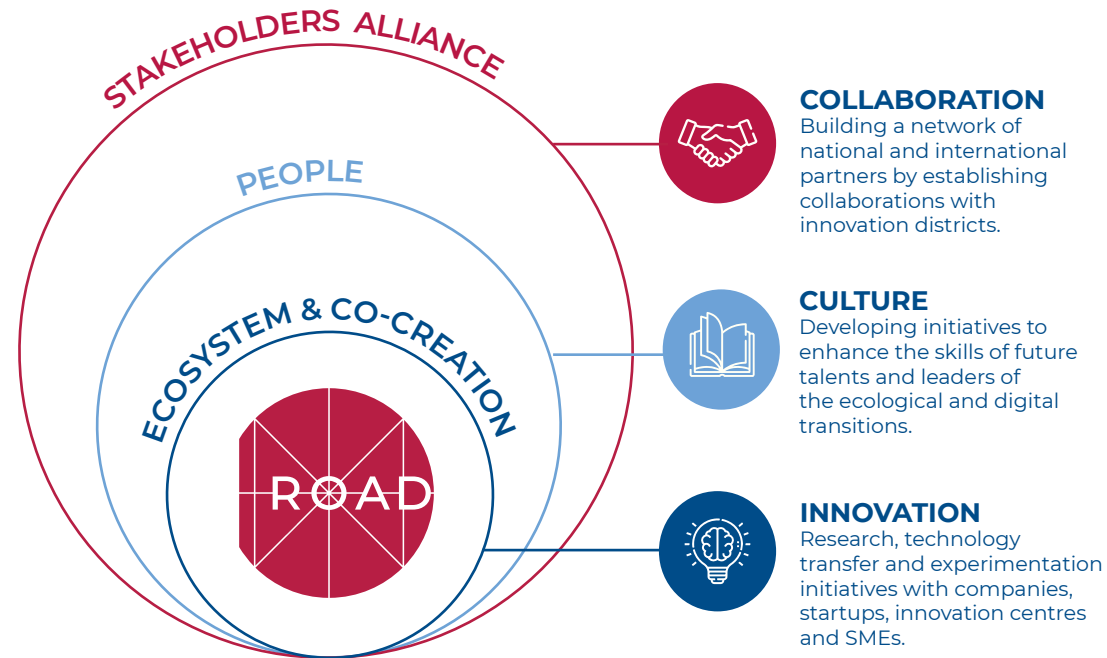
The **FS Group** is one of the Country's largest industrial enterprises. It promotes safe, comfortable and efficient mobility, actively contributing to progress through innovative and sustainable solutions.



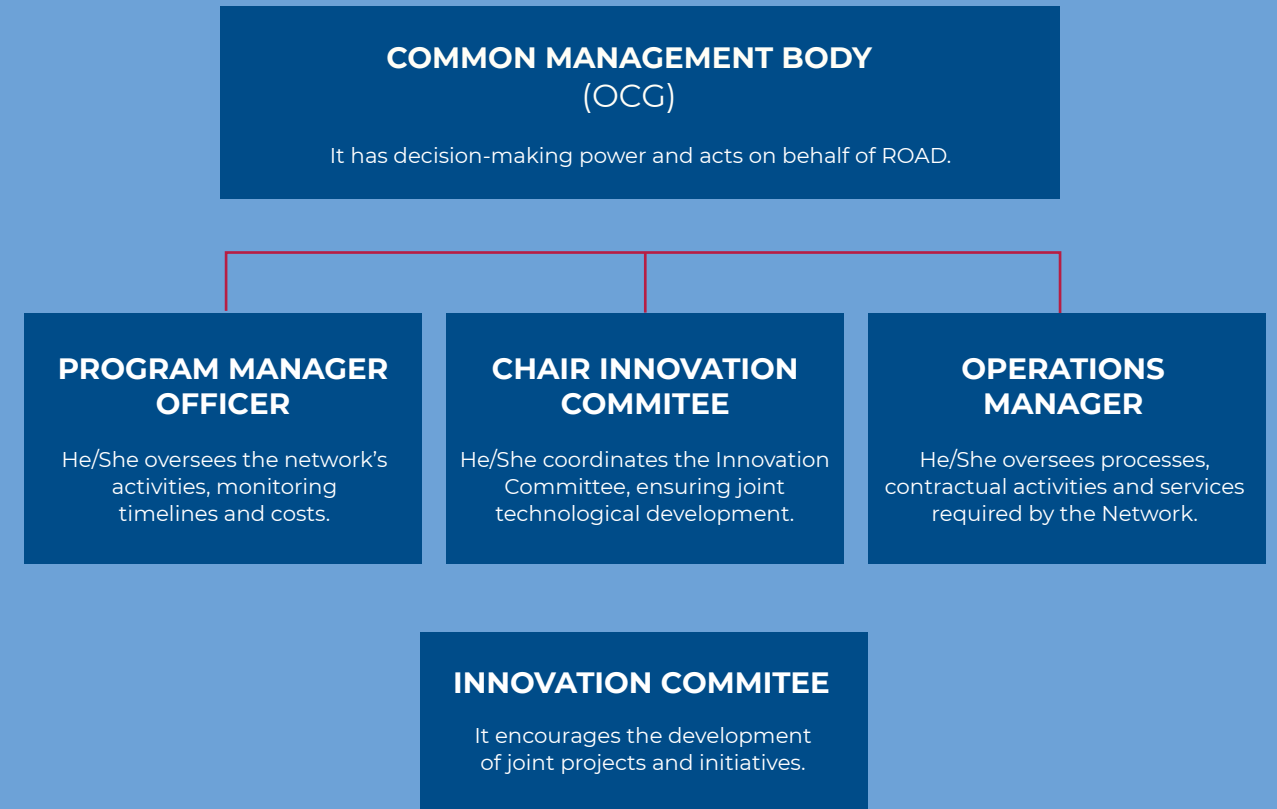
**NextChem** is a company operating in the field of green chemistry and technologies supporting the energy transition. It is owned by Maire S.p.A., a leading company in the transformation of natural resources.

# THE OPERATIONAL MODEL

The operational model of ROAD is designed to foster the creation of a technological innovation district through an **integrated approach**. At the core is a strategic alliance between companies, institutions and research centres, which work together **to develop and test new technologies**.



# THE ORGANISATIONAL MODEL



# THE ECOSYSTEM



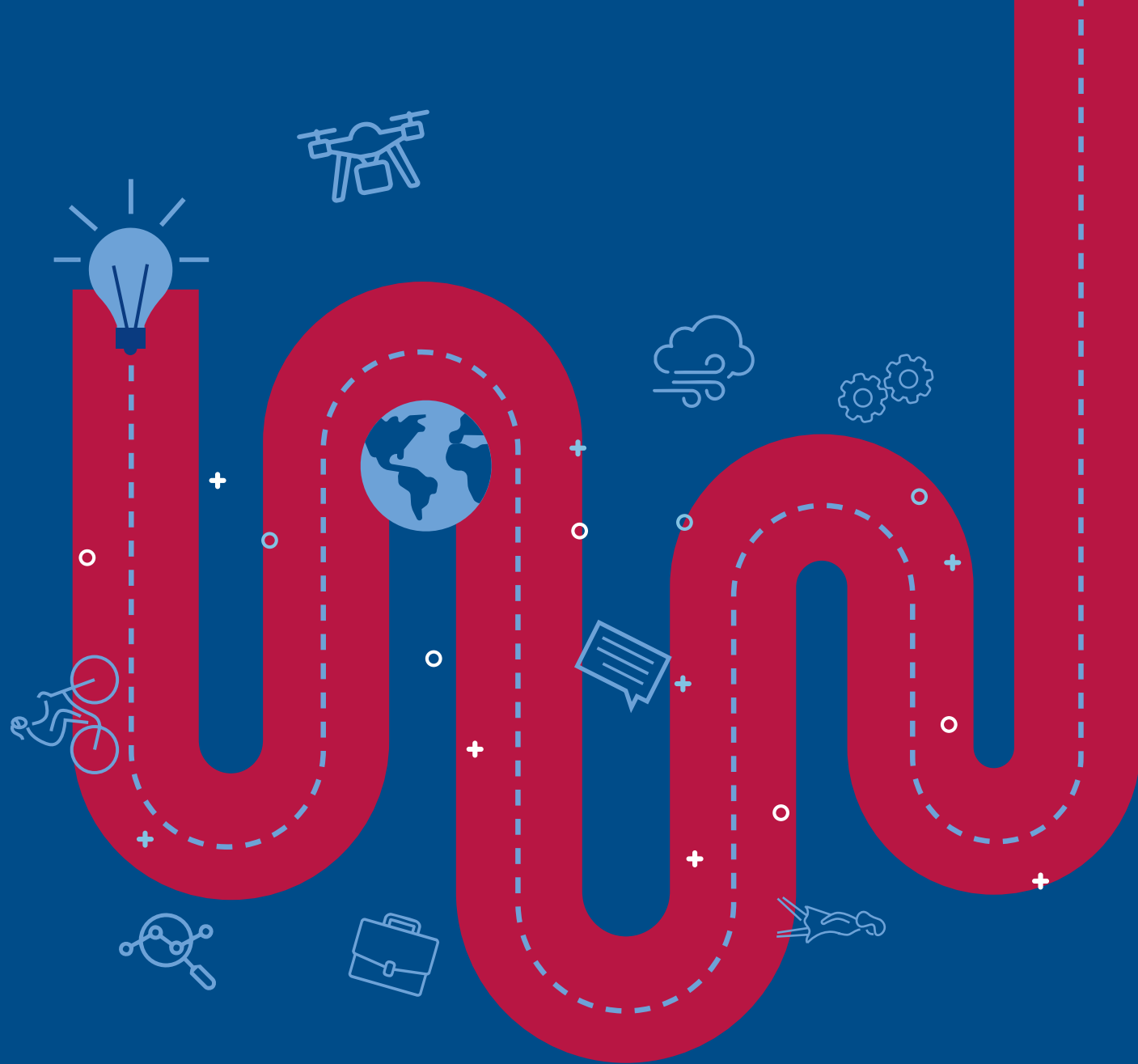
Q3

**HIGHLIGHTS**





**WHAT WE DO**



## WHERE INNOVATION MAKES ITS WAY

At ROAD, innovation is delivered through concrete projects that address the challenges of transitions, turning research, technologies and expertise into practical, sustainable solutions.

The District's activities are structured around **three pillars** that guide ROAD's growth and development: Ecosystem & Co-creation, People, Stakeholders Alliance.

**ECOSYSTEM & CO-CREATION:** the District operates as a true living lab, a continuous testing environment where advanced technologies, data and simulations come together to generate innovative solutions.

**PEOPLE:** at ROAD, where training, skills and networks drive innovation, the focus is on developing human capital. Companies and professionals are supported through the digital and ecological transitions, enabling the development of new capabilities.

**STAKEHOLDERS ALLIANCE:** the Network builds on connections and relationships, promoting tangible exchanges of know-how with hubs, districts and science parks in other Countries. In addition, ROAD fosters collaboration, synergies and opportunities for shared innovation.

# PROJECT AREAS

## SMART CITY AND MOBILITY



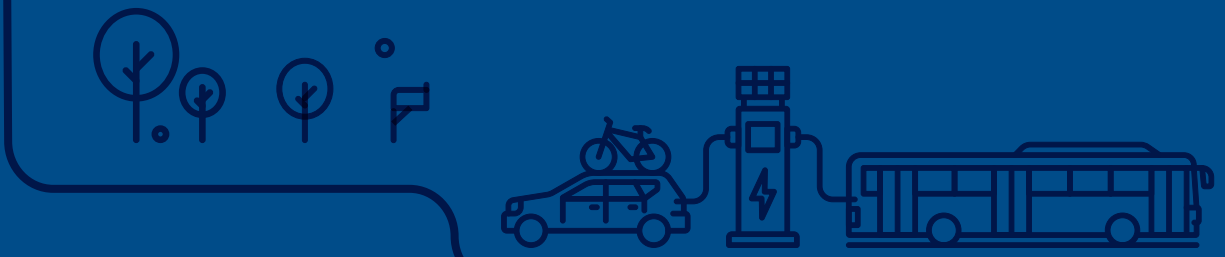
## RESILIENT INFRASTRUCTURE



## ENVIRONMENT AND HEALTH



## HUMAN CAPITAL



## SMART CITY AND MOBILITY

Urban development is driven by technological innovation. ROAD is testing innovative solutions to make cities **more efficient, safer and more sustainable**, helping to reduce environmental impact and improve quality of life.



DIGITAL TWIN



AUTONOMOUS DRIVING



DRIVE OVER

## DIGITAL TWIN

The project will further develop the ROAD Digital Twin into a **dynamic tool for monitoring**, scenario simulation and decision support for businesses and institutions. The model uses data on traffic, maintenance activities, weather conditions and people flows to simulate **different scenarios** and reduce the impact of infrastructure activities on the city and its residents. The project turns data into a practical tool to **improve infrastructure management** and make cities more efficient and sustainable in their use of urban resources.

### FOCUS



#### DEVELOPMENT OF THE DIGITAL TWIN

Evolution of the tool into a dynamic platform for simulation and monitoring.



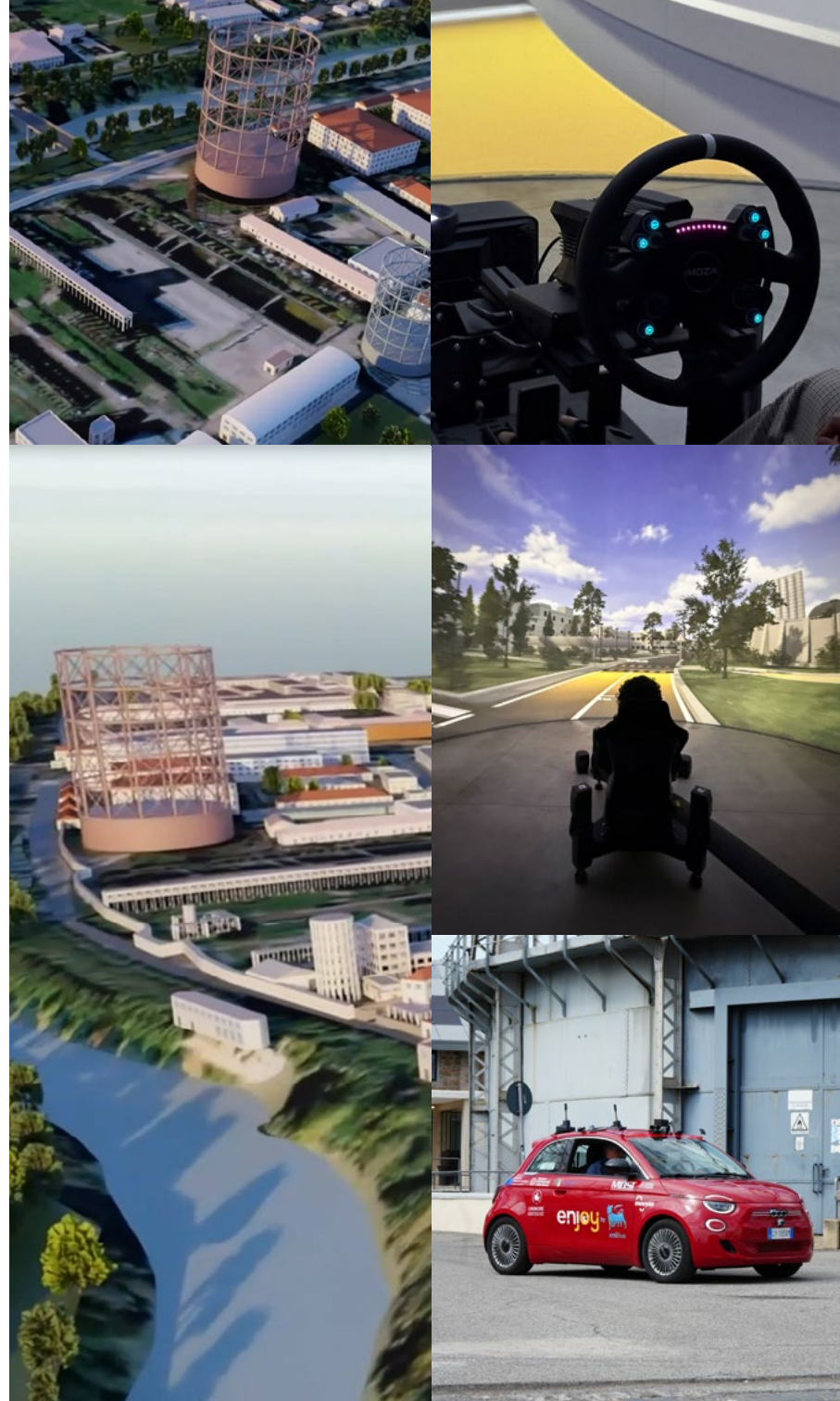
#### URBAN DATA ANALYSIS

Integration of data on traffic, weather, roadworks and pedestrian flows.



#### DECISION SUPPORT

Creation of scenarios to reduce the impact of infrastructure activities on the city.



## AUTONOMOUS DRIVING

The **Mobility Autonomous Driving** workstream builds on the progress made under the FULL ROAD project, developed by MOST (the National Centre for Sustainable Mobility) Foundation, focusing on optimising the control room, autonomous vehicles, the smart test track and the remote assistance platform. The new phase includes field testing to demonstrate the practical application of solutions such as on-demand remote assistance, geofenced missions, automated manoeuvres and performance-monitoring dashboards. The project supports the **development of autonomous and smart mobility**, improving safety, efficiency and fleet management.

### FOCUS



#### ON-ROAD TESTING

Real-world testing of autonomous vehicles and smart infrastructure.



#### REMOTE ASSISTANCE AND CONTROL

Development of operational solutions for the management of autonomous fleets.



#### PERFORMANCE MONITORING

Creation of dashboards and KPIs to assess system effectiveness.

## DRIVE OVER

The project develops an innovative solution for the **automatic monitoring of tyre wear across** fleets. The system uses floor-mounted sensors capable of **measuring tread depth** quickly and without manual intervention, while also **detecting irregular wear**, triggering predictive maintenance actions and improving fleet management.

### FOCUS



#### **AUTOMATED TREAD DEPTH MEASUREMENT**

Development of drive-over technology using floor-mounted sensors.



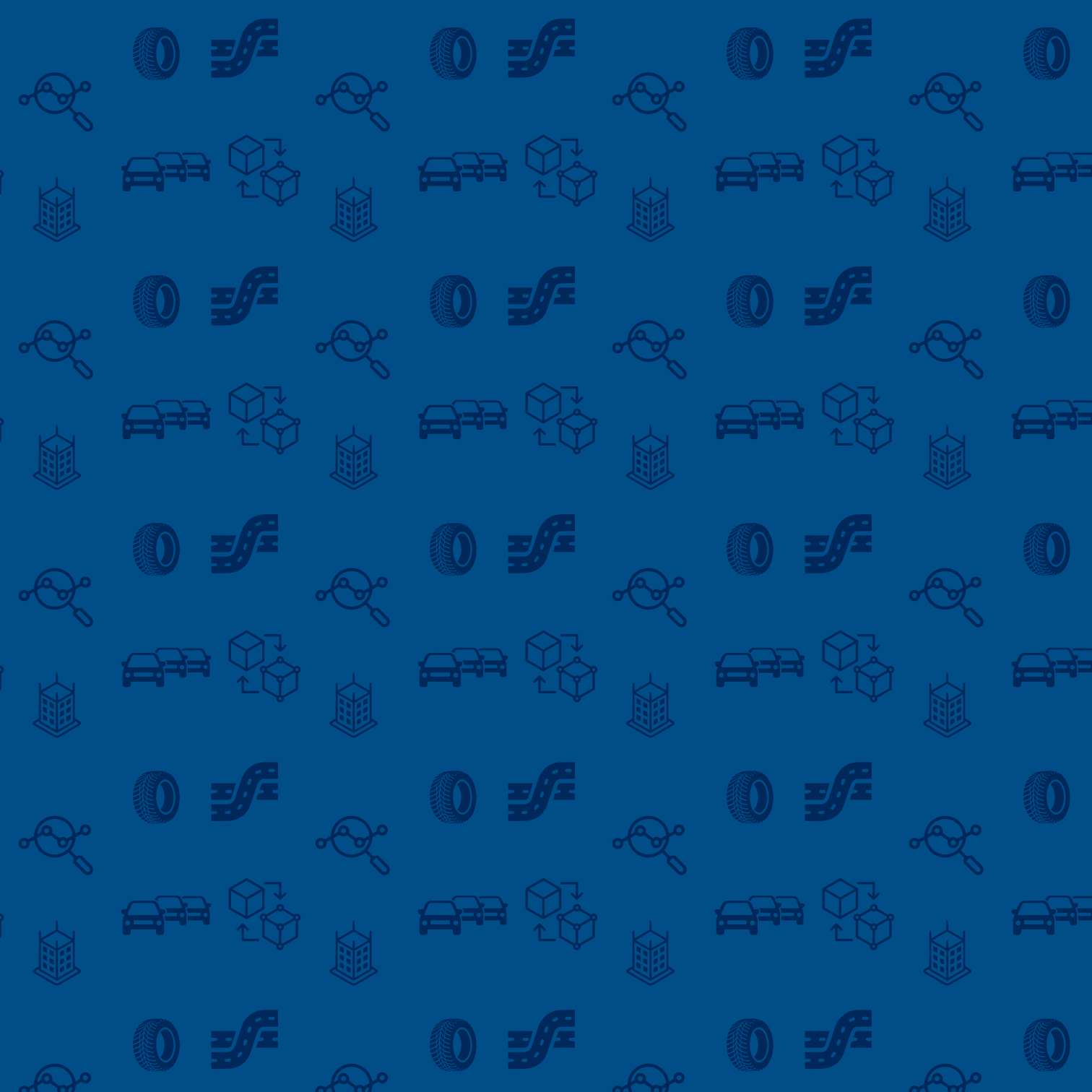
#### **PREDICTIVE MAINTENANCE**

Use of data to anticipate maintenance schedules and reduce operating costs.



#### **PLATFORM INTEGRATION**

Integration of the system with fleet management software.



## RESILIENT INFRASTRUCTURE

**Infrastructure safety and efficiency** are essential to the way cities function. ROAD is developing innovative solutions for **monitoring and maintaining critical networks**, using advanced technologies to prevent failures, reduce risk and optimise operational management.



URBAN DRONES



ASSET RESILIENCE TOOL

## URBAN DRONES

The industrial PhD project on drones focuses on developing new approaches to monitoring and intervention in urban environments. The aim is to study the **aerodynamic and acoustic behaviour** of different types of drones and to **develop predictive models** based on artificial intelligence. This makes it possible to understand how drone performance changes under different operating and environmental conditions, helping to make these technologies safer, more efficient and better integrated into cities. The initiative brings together **research, testing and innovation** to develop solutions for urban mobility and monitoring.

### FOCUS



#### AERODYNAMIC AND ACOUSTIC ANALYSIS

Study of drone behaviour in different operating contexts.



#### ARTIFICIAL INTELLIGENCE

Development of models capable of predicting drone performance and "acoustic signature".



#### IN URBAN ENVIRONMENTS

Testing of new solutions for monitoring and intervention in cities.



## ASSET RESILIENCE TOOL

The project is designed to support companies in **managing extreme weather events** and improving infrastructure safety. ROAD is developing a personalised tool for weather monitoring and decision support, capable of analysing key variables such as rainfall, temperature, wind, lightning and environmental factors. The system will enable the early **identification of potentially critical situations and support operations and maintenance teams** in planning interventions. This approach combines data and technology to make infrastructure safer, more efficient and more resilient over time.

### FOCUS



#### ADVANCED WEATHER MONITORING

Development of a tailored tool for analysing critical weather variables.



#### DECISION SUPPORT

Use of data to plan preventive and timely operational interventions.



#### INFRASTRUCTURE RESILIENCE

Application of the model to improve safety, operational continuity and risk management.

## ENVIRONMENT AND HEALTH

Sustainability is central to urban transformation and will play a decisive role in shaping the cities of the future. In this context, ROAD is developing systems for air quality **monitoring and the sustainable management of water resources**, helping to improve public health.



WATER MANAGEMENT



AIR QUALITY



## WATER MANAGEMENT

As part of the sustainable management of water resources, the project focuses on testing an innovative solution to **produce drinking water directly from the air**. The aim is to validate the technology from a technical and economic perspective, enabling not only the production of water but also the **recovery of heat for domestic hot water and the supply of cool air** for indoor cooling.

### FOCUS



#### WATER PRODUCTION FROM AIR

Validation of the innovative technological solution.



#### ENERGY EFFICIENCY

Heat recovery and integration with energy systems.



#### TECHNICAL AND ECONOMIC ASSESSMENT

Analysis of the model's sustainability and applicability.



## AIR QUALITY

The industrial PhD project focuses on **monitoring air quality** in urban environments and **analysing individual exposure** to air pollution. Using low low-cost portable devices, data are collected on air pollutants and environmental parameters, both outdoors and indoors. The initiative combines scientific research, technology and citizen science to **improve quality of life** in our cities.

### FOCUS



#### AIR QUALITY MONITORING

Data collection on PM, CO<sub>2</sub>, CO and environmental parameters.



#### INDIVIDUAL EXPOSURE

Study of the link between pollution and lifestyle.



#### CITIZEN SCIENCE

Engaging citizens in data collection.

## HUMAN CAPITAL

Digital transformation and the ecological transition require new skills. ROAD is investing in training through programmes focused on **talent development** and workforce reskilling. The aim is to create **opportunities** and support companies and workers through change, building an inclusive and collaborative innovation mindset.



ROAD ACADEMY



JOB TRANSITION BOOK



ROAD COMMUNITY  
E H-ROAD LAB



## ROAD ACADEMY

It is ROAD's advanced training programme designed to prepare professionals for the **challenges of the future**. The initiative not only enhances company resources through upskilling and reskilling, but also strengthens the **link between training and the future of work** through an innovative, collaborative and forward-looking approach. In its second edition, the programme has been strengthened, with a focus on intrapreneurship, an optimised training model and the start of international expansion.

### FOCUS



#### TALENT DEVELOPMENT

Training professionals with a strong "T-shaped mind", combining technological, cross-functional and managerial skills.



#### INTRAPRENEURSHIP

Strengthening an entrepreneurial approach within organisations.



#### INTERNATIONALISATION

Opening the programme to international contributions and collaborations, while acting as a catalyst for building strong, long-term partnerships.



## JOB TRANSITION BOOK

The Job Transition Book is a tool developed by ROAD to **guide companies through the professional transformation required by the ecological and digital transition**. The first update to the JTB is scheduled for 2026 and will expand and strengthen the tool developed by ROAD to support the transformation of work. The update will introduce **new areas of knowledge** related to the ecological and digital transition, a new section dedicated to the **social dimension** and a further one dedicated to **artificial intelligence** to facilitate the creation of new professional profiles. This development will make the model even more valuable for companies and the labour market.

### FOCUS



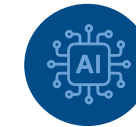
#### NEW AREAS OF KNOWLEDGE

Expanding knowledge of the ecological and digital transition, including bioeconomy, green marketing, robotics and artificial intelligence.



#### SOCIAL DIMENSION

Introducing a new area aligned with the SDGs.



#### AI INTEGRATION

Developing prompts to rapidly generate new professional profiles.



## ROAD COMMUNITY E H-ROAD LAB

The ROAD Community project is designed to build a dynamic **network of people and initiatives**, generating ideas, encouraging cross-fertilisation and driving change. The aim is to create an active **community where participants can connect, recognise each other and collaborate**. The H-ROAD Lab is an experiential lab that positions HR as a driver of innovation and an enabler of change. It brings together HR teams and external professionals to exchange views on key topics (processes, skills and culture), with the aim of identifying **improvements and anticipating trends**, placing people at the centre.

### FOCUS



#### COMMUNITY DEVELOPMENT

Strengthening connections between people and projects across the ROAD network.



#### HR AS A DRIVER OF INNOVATION

Dialogue between companies and professionals on skills and organisational culture.



#### EXPERIENTIAL LAB

Bringing together training, experimentation and practical project work.





**INTERNATIONAL  
RELATIONS  
AND COLLABORATIONS**

## INTERNATIONAL RELATIONS AND COLLABORATION

ROAD promotes the exchange of expertise, experience and operating models between hubs, districts and science parks, including through **delegations abroad** and the development of **international collaborations**. The initiative encourages cross-fertilisation between different organisations, creating opportunities for joint development and accelerating the spread of innovation. This activity expands the scope of the ROAD ecosystem and strengthens its role as a **platform for connection and collaboration** at both national and international level.



### INNOVATION DISTRICTS

- |                                 |                               |                               |  |                    |
|---------------------------------|-------------------------------|-------------------------------|--|--------------------|
| 1. Atlas<br>New York<br>Pechino | 2. Kilometro Rosso<br>Bergamo | 3. AMS Institute<br>Amsterdam | 4. Sophia Antipolis -<br>Eurecom<br>Antibes  | 5. EUREF<br>Berlin |
| 6. ZPark<br>Pechino             | 7. TusPark<br>Jiangsu         | 8. HiCool<br>Pechino          | 9. Ministero dell'Istruzione<br>Superiore, della Scienza<br>e dell'Innovazione<br>Tashkent |                    |

# Connecting ROADS

Castel Gandolfo  
15-16 Ottobre  
2025



## THE IMPORTANCE OF CONNECTIONS





**Registered office**

Via del Commercio 9/11, Rome, Italy  
VAT N N. 17107441002

\*

The images on pp. 32-36-37 were generated by artificial intelligence ("AI") and are used solely for illustrative purposes in the publication of the Book Road 2025-2026. Copyright for the images belongs to their respective owners. Any reproduction, distribution or use of the images, including the use of AI systems, is prohibited. The images were produced in accordance with a system licensed by Adobe Photoshop. Liability for any unauthorised or other use of these images cannot be attributed to the Eni Group. The end user therefore agrees to hold the Eni Group harmless from any liability for damages resulting from improper or unlawful use of the images. In particular, the Eni Group cannot be held liable for violations of third-party intellectual property rights arising from AI-generated content, as such systems may generate content identical or similar to that provided by other users, are subject to technical limitations and may produce unreliable outputs.



Follow ROAD on LinkedIn



Visit the ROAD website

Powered by



Mappa: 1

Tevere

Alleg. 513

Via

Poste

Via

Poste

Commercio

